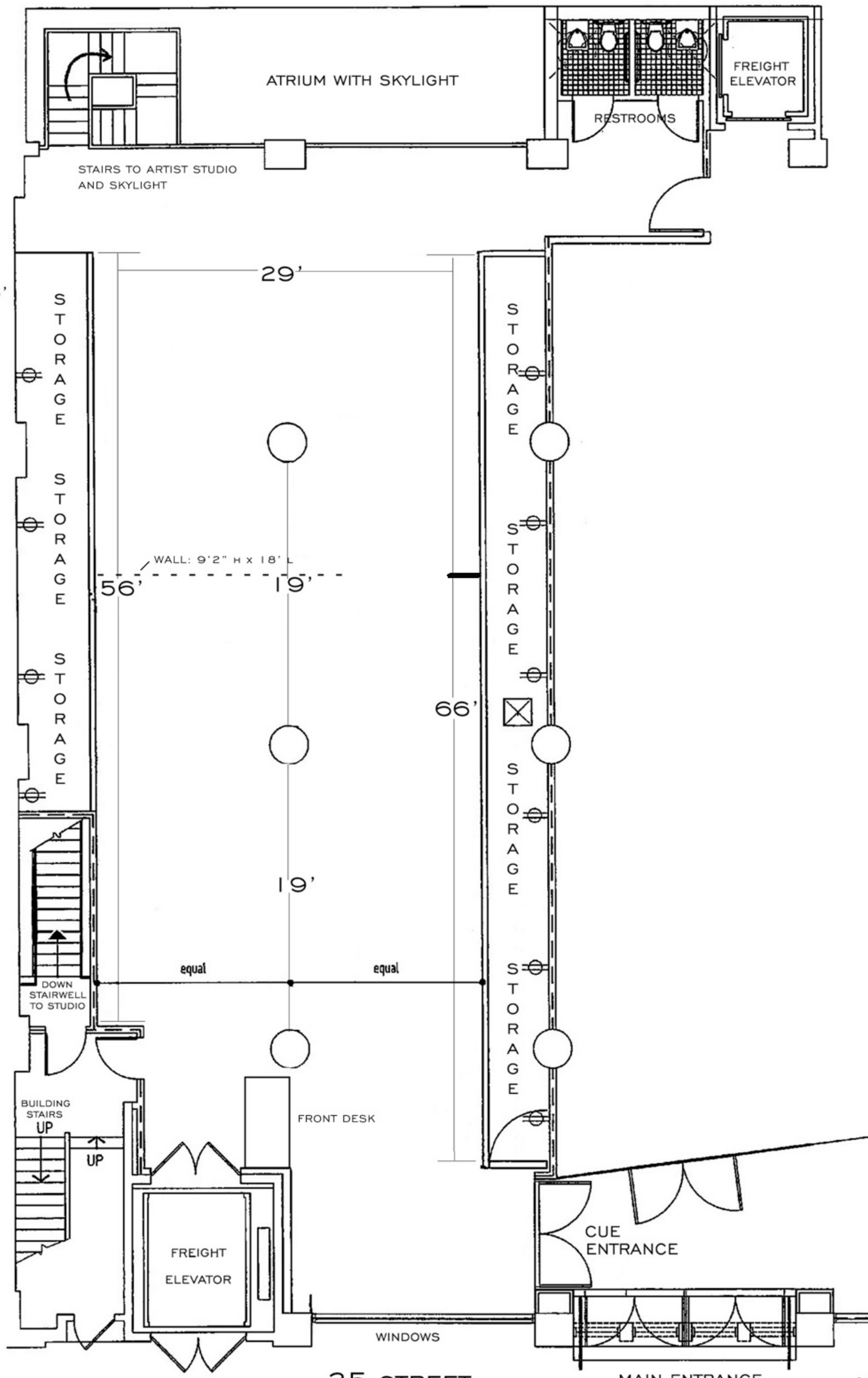


CEILING HEIGHT = 13'



ATRIUM WITH SKYLIGHT

FREIGHT ELEVATOR

RESTROOMS

STAIRS TO ARTIST STUDIO AND SKYLIGHT

STORAGE  
STORAGE  
STORAGE

STORAGE  
STORAGE  
STORAGE  
STORAGE  
STORAGE

WALL: 9'2" H x 18' L

DOWN STAIRWELL TO STUDIO

BUILDING STAIRS UP

FRONT DESK

FREIGHT ELEVATOR

CUE ENTRANCE

WINDOWS

25 STREET

MAIN ENTRANCE TO BUILDING

NORTH

scale: 1/8" = 1'-0"

